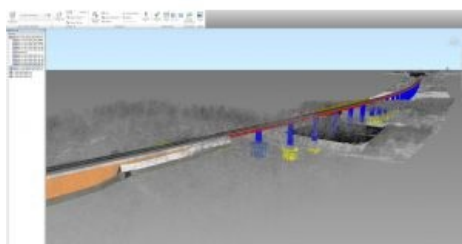
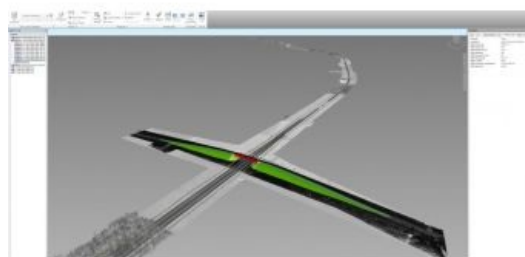


LINKING NATIONS, PEOPLE AND PLACES

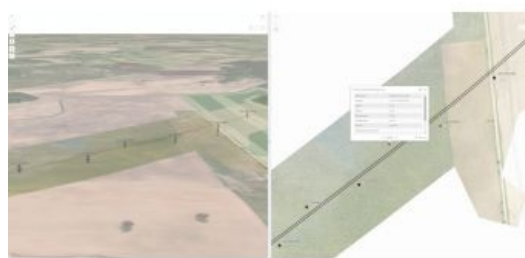
How Geospatial Data Supports a Digital Railway Project



The scope of the Rail Baltica Global Project comprises 870km of tracks, 25km of major structures and more than 400 bridge structures (bridges, overpasses, viaducts, pedestrian crossings and animal crossings), as well as three freight terminals and seven international passenger stations. Besides that, there are rolling stock maintenance facilities, an energy subsystem and signalling. This article zooms in on the pivotal role geospatial technology plays in the BIM strategy that underpins the digital version of [Rail Baltica](#).



When it comes to modelling this highly ambitious project in a digital environment, in order to manage [Rail Baltica](#) as a single asset, RB Rail AS has been developing a detailed BIM strategy that will be used during the design, construction and operation of the line.



With the design phase well underway and with works ongoing on 411km of the main line, the BIM strategy has already been applied, and the designer has already submitted the first value engineering solutions using RB Rail AS proprietary BIM standards.

Value engineering stage. A federated BIM model, including a point cloud of the existing situation, a railway track embankment and alignment, and a bridge structure.

The detailed BIM strategy was developed by [AECOM INOCSA](#) – it consists of extensive documentation and templates that will be used for the successful implementation of the BIM process for the Rail Baltica Global Project.

The strategy defines the rules and principles that all parties involved in the project must follow. These rules ensure that all information delivered during the design and construction stages of the project is created and organized using the same principles, to ensure interoperability between deliverables from the different disciplines, and even between deliverables from different design companies.

Open Data Approach

One of the main focuses of this strategy is to ensure smooth information transfer for future asset management, so that all the valuable data collected about the assets during the design and construction stages remains usable throughout the entire lifecycle of the infrastructure. In other words, information about the real physical built assets is collected, stored and maintained in a database and can be used for maintenance of the railway infrastructure throughout its full operating period.



Value engineering stage. A federated BIM model, including a point cloud of the existing situation, a railway track embankment

and alignments, and an overpass structure.

For example, if a catenary post is designed in a digital environment – using the BIM system – then the database contains information about its geometry, location, materials, fixtures, and specifications. During the construction stage, information about the built asset is added, e.g. the installation date, maintenance manuals and the construction schedule. Then later, during the maintenance and operation stage, all of this information can be used for creating maintenance schedules, creating work orders, etc.

Proof that the detailed BIM strategy has been successfully developed can be found in the release of the first value engineering deliverables for the design sections in Lithuania and Estonia.

A Common Data Environment

Another very important aspect of the strategy is defining the file structure, formats and content of the delivered data. Nowadays, there are many different types of design software, each of which usually has its own proprietary file formats. These file formats serve their purpose if all the design work is done using one software solution for all disciplines. But as soon as this information needs to be used in another software solution, the interoperability between different formats becomes very important.

The strategy uses an open BIM approach, where the main exchange format used is [IFC](#), which makes it possible to review graphical and attribute information in many different software solutions. The end users can pick their software and will still be able to access the information.

Files in a native format are required so that all the information is collected and archived. This is a very important aspect for being able to edit the information if necessary, e.g. when using the initial information for possible future designs.

Based on the developed strategy, a CDE (Common Data Environment) was procured and its deployment has already started. Bentley Systems' [ProjectWise](#) CONNECT Edition solution was chosen as the best-suited for the railway infrastructure project as it ticks all the boxes – it is a modern, industry-leading solution that ensures collaborative workflows between all parties involved in the project. For the next couple of months, extensive work will be underway to deploy and configure the system, so that it is tailored to the specifics of the Rail Baltica Global Project.



Value engineering stage. 3D view in GIS web interface.

Parallel to these developments, a GIS solution using the Esri [ArcGIS](#) system is also being implemented for the project. The use of GIS, in combination with other digital data, opens up several different use cases, from land acquisition planning to representing geotechnical investigation results. Orthophoto and Lidar (point cloud) data are collected using UAVs (unmanned aerial vehicles, or 'drones') and airplanes. It enables the examination of both natural and manmade environments with accuracy, precision, and flexibility. Engineers are using Lidar to produce more accurate maps, make digital elevation models for use in GIS, as a basis for design, etc. The use cases for utilizing the collected data are almost endless and, as the Global Project evolves, the technologies involved will evolve as well, as will use cases for all the technological solutions.

Tips for Future Suppliers of Rail Baltica

A lot of opportunities come with this approach, but all of these requirements also create different challenges. One of the main challenges is finding local and foreign experts and specialists who have experience working in such environments.

Working in a collaborative environment is not something that designers and construction companies are accustomed to – digital construction, however, is an environment where the construction and IT worlds meet, so IT-minded civil and construction engineers are and will continue to be in high demand. They are the cornerstone of the success of this environment.



Site investigations stage. 3D/2D view in the GIS web interface for geotechnical site investigation.

Currently, the construction industry is in a transition phase – it is adopting new principles and ways of working, so new roles such as BIM or AIM (Asset Information Management) managers and coordinators are expected to appear. More and more experts are gaining experience in this area, and eventually every engineer will be able to work in such an environment.

For example, consider the requirements for asset management. It is expected that information about the physical built assets will be entered into a common database in correspondence with as-built information – the Asset Register. This attribute information could include installation data, warranty periods, technical data sheets and manuals, etc. This information would be entered and then verified by the construction companies.

For the Rail Baltica Global Project, every designer and every construction engineer will be required to work in compliance with these requirements.

This article was provided by Rail Baltica.



Existing situation terrain model: Orthophoto and Lidar point cloud.