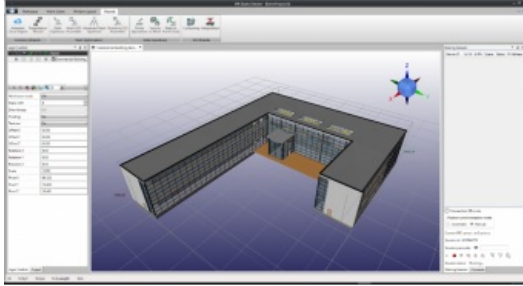


Arvizio Integrates Mixed Reality Platform with Autodesk BIM 360



Arvizio recently has announced the integration of their MR Studio enterprise mixed reality platform with the Autodesk BIM 360 and A360 applications. The inclusion leverages the Forge API to seamlessly convert and import models created with design tools such as AutoCAD, Revit, Inventor, Navisworks and others, into MR Studio for optimization and visualization on Magic Leap, Microsoft HoloLens, mobile AR devices and virtual reality headsets.

BIM 360 and A360 are cloud-based solutions geared to Architecture, Engineering and Construction (AEC) and Product Design and Manufacturing design teams respectively. Both provide project collaboration and sharing tools and support more than 50+ 3D data formats. Arvizio's integration of these solutions into MR Studio allow 3D models held in a

wide range of formats to be imported, optimized and visualized in AR/MR. Using the Arvizio multi-user visualization tools, users are able to visualize and mark up models across locations and may join collaborative sessions using a variety of devices.

"The large 3D models in the AEC, energy, automotive, mining, product design, manufacturing and other industries are created using an assortment of design tools and have not been suitable for use with non-PC based augmented and mixed reality solutions," said Jonathan Reeves, CEO at [Arvizio](#). "Arvizio's integration of BIM 360 and A360, coupled with our advanced 3D model optimization and GPU-accelerated hybrid rendering, allow users to work with very large-scale models rendered at life size."

<https://www.gim-international.com/content/article/arvizio-integrates-mixed-reality-platform-with-autodesk-bim-360>
