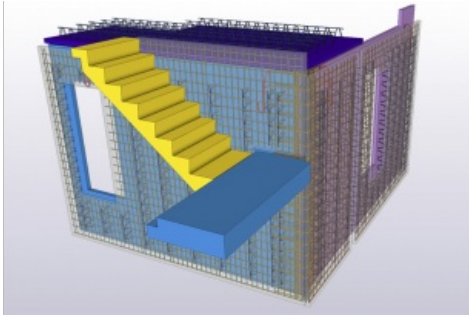


KP1 and Trimble Sign a Strategic BIM Design Partnership Agreement



KP1 Group, a French leader of precast building systems, and Trimble Solutions France, provider of Tekla Structures software and other construction solutions, have signed a strategic partnership agreement. In order to optimize and rationalize the process of its 39 sites, including 21 production plants all over France, KP1 Group has redefined and sped up the use of new building information modelling (BIM) technologies.

KP1 investigated model-based solutions that would integrate into its production strategy in a flexible way. Trimble's software solutions [Tekla Structures](#) and [Trimble Connect](#) cover the whole design and detailing process for the beam-column building types but also structures including double walls.

KP1 can now integrate the Trimble BIM solutions into its overall production process; from modelling the design to the fabrication data (CAD/CAM) for automation as well as information for purchasing and invoicing.

Observing site and plant constraints

Trimble solutions and tools are responsive to the needs of the whole precast concrete industry for the detailing of complete precast systems such as concrete elements and their openings, reinforcement and embeds like lifting and propping systems. The BIM solution is integrated with fabrication and observes site and plant constraints such as production tables maximum dimensions or crane lift capacity on site.

"As a software developer for construction, it is a privilege to work in close collaboration with KP1, one of the leading specialists in precast concrete construction in France. This partnership with KP1 allows us to better understand the needs and challenges the industry faces. It is inspiring to be able to understand and clearly see the implications of the new technologies and BIM in the precast concrete industry," said Jean-Yves Vétel, manager at Trimble Solutions France.

"The digital model is now the exchange medium between the various specialized software used in engineering offices, by architects and economists. We can now produce digital models for pre-engineering and all general arrangement, mass and detail drawings from the model. We are happy to carry on with our software developments in order to produce systematic digital models associated with the full range of our products with all the information. We are pleased to have signed this unique partnership agreement with Trimble, it is a major step in our strategy to develop our technical expertise," stated Charles-Emmanuel Lamy, technical director, development and BIM strategy at KP1.